

GIS Mapping of Mat-Su Lands

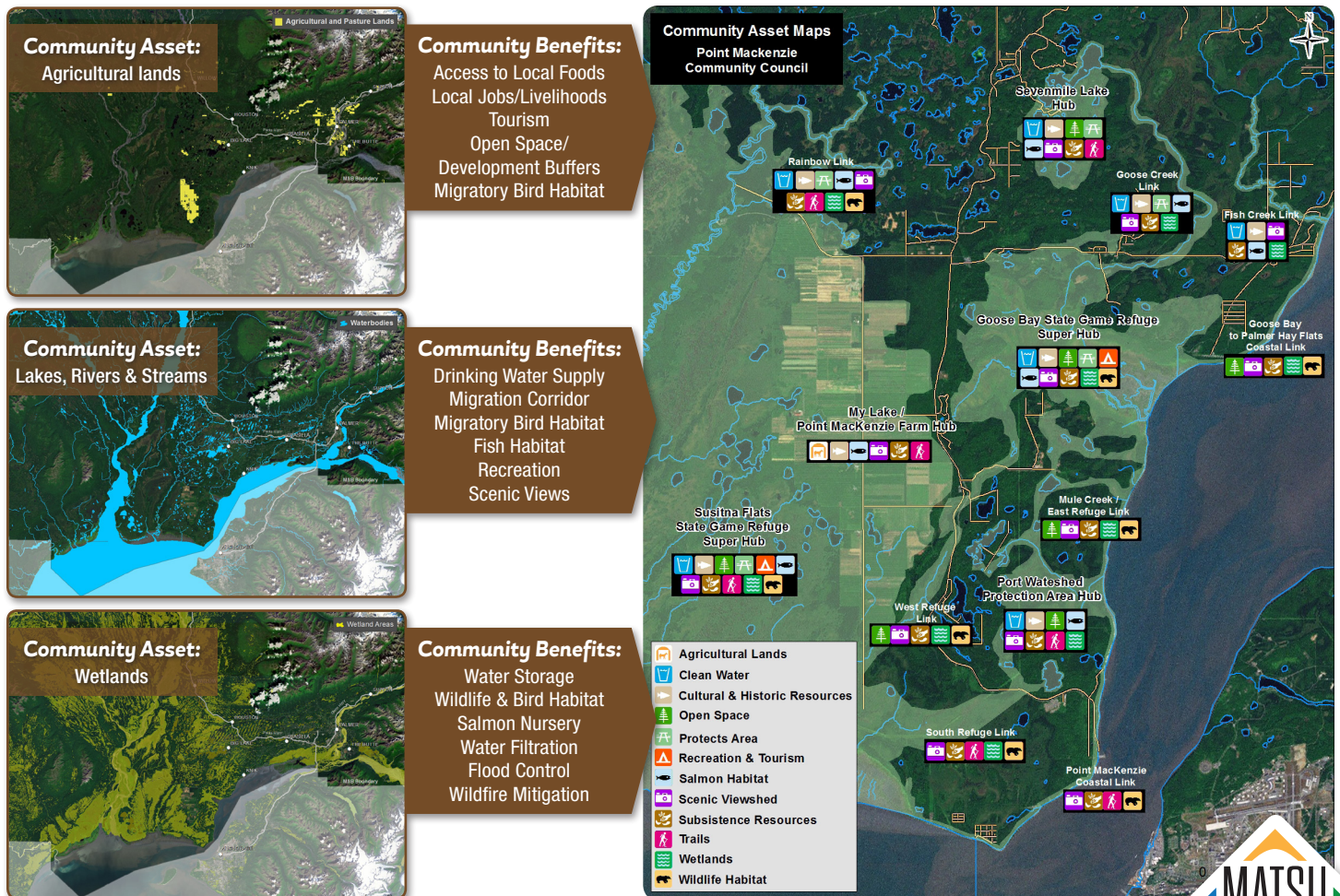
Using geographic information system (GIS) tools to identify our community assets

Laying the Groundwork

The Mat-Su is the fastest growing area in the state. With all the people come their needs: schools, roads, waste and water infrastructure, maintenance services, etc. To make informed decisions about the future and to sustain the character of the valley, we first need to understand what our lands do for us and how valuable they are to our communities. Farms, fish, trails, open space and clean water are some of our **community assets** that provide essential benefits to residents. Geographic Information System (GIS) mapping is a computer system that can show data related to physical locations.

Parsing the Parcels

Great Land Trust, the U.S. Fish and Wildlife Services, and the Mat-Su Borough have worked to prioritize critical habitat for fish and wildlife, wetlands that are essential to regional water quality, and wildlife and recreation corridors. GIS mapping shows where these are located in relation to each other and to communities, farms, and neighborhoods. They can be analyzed from a 10,000 foot view or zoomed in to a specific parcel. This information is essential to gain a better perspective on the benefits provided by different lands across the valley. GIS mapping is a powerful tool communities can use to make decisions on how to accommodate valley growth.



Learn more about community assets mapping at www.greatlandtrust.org.
Find more about GIS mapping other Mat-Su studies at matsu2050.org.

